



PERRY EQUIPMENT CORPORATION
AN ISO 9001 COMPANY

SERIES 95 VANE MIST ELIMINATOR

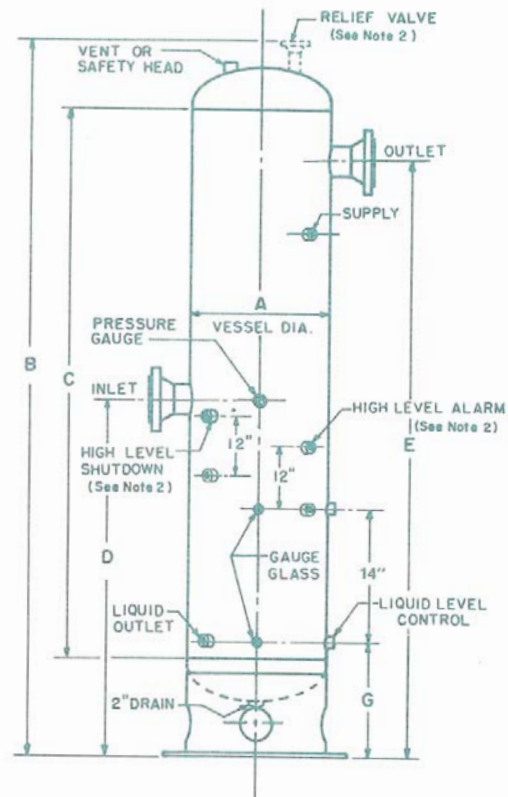
INSTALLATION INSTRUCTION

Due to the design, the Series 95 Vane Mist Eliminator requires little or no maintenance. These units do not have any moving parts that require replacement. Installation should be made in accordance with the following procedure.

1. Familiarize yourself with the drawing showing the location of all connections.

Note: Inlet and Outlet nozzles are so marked

2. Install unit insuring the inlet nozzle is facing upstream.
3. Install auxiliary equipment such as gauge glasses, liquid level controls, high level shutdown and high level alarm as required.
4. Connect Liquid drain.
5. If a liquid level control is utilized, set the maximum liquid level below the upper gauge glass connection. If no liquid level control is utilized, the liquid level must be maintained below the upper gauge glass connection manually to insure efficient separation.



INSTALLATION & OPERATING INSTRUCTIONS

IF DIFFICULTY IS EXPERIENCED WITH THE INSTALLATION OR OPERATION, CONTACT YOUR LOCAL REPRESENTATIVE OR THE FACTORY

ENGINEERED FILTRATION TECHNOLOGIES